



植物  
召喚術  
工作坊

*Botanic Workshop: Summon the Discourse*

7/13-19

transArt NCTU

# WORKSHOP REPORT

Botanic Workshop  
Summon the Discourse





植物  
召喚術  
工作坊

*Botanic Workshop: Summon the Discourse*

7/13-19

# Botanic Workshop Summon the Discourse

Organized by the  
transArtNCTU

Conducted by  
Pei-Ying Lin,  
Chih-Wei Chuang,  
Chihao Yo

IAA, NCTU, Taiwan,  
13-19 July, 2015



Tutors (Independent Artists) :

Pei-Ying Lin

Biology art  
& interaction design

Chih-Wei Chuang

Interactive light  
& space art installation

Chihao Yo

Physical computing  
& systems integration





### Participants:

20 Participants from members of transArtNCTU & students from NCTU

Workshop reported by:  
Yueh-Tuan Li,

Former Exchange student at Media Lab Helsinki, 2008  
Ph.D. in Arts at NCTU, 2015(yes, just graduated!)





Content  
of botanic workshop report:

Concepts



Methodology



Final  
Presentations



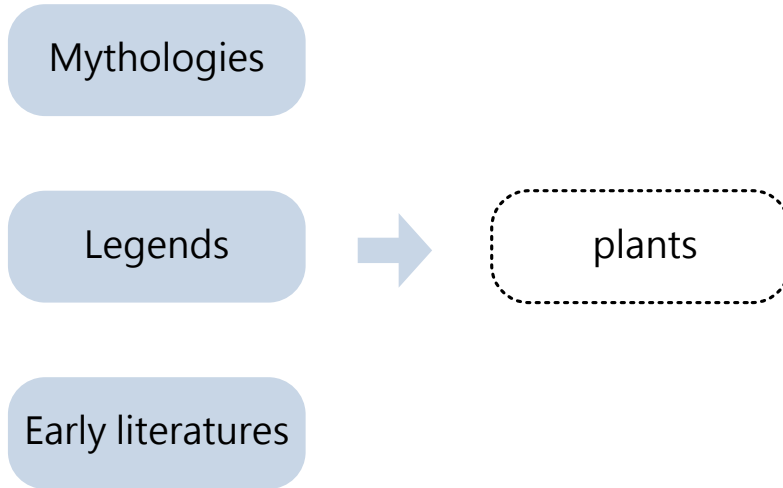
The background is a detailed botanical illustration featuring various plants and flowers. A large, semi-transparent light blue circle is positioned on the left side, containing the word 'Concepts'. The illustration includes a cluster of purple flowers, pink flowers, a large red flower, and a yellow flower. The background also features faint, repeating circular patterns that resemble university seals or crests.

Concepts

The following theoretical topics were covered in the workshop:

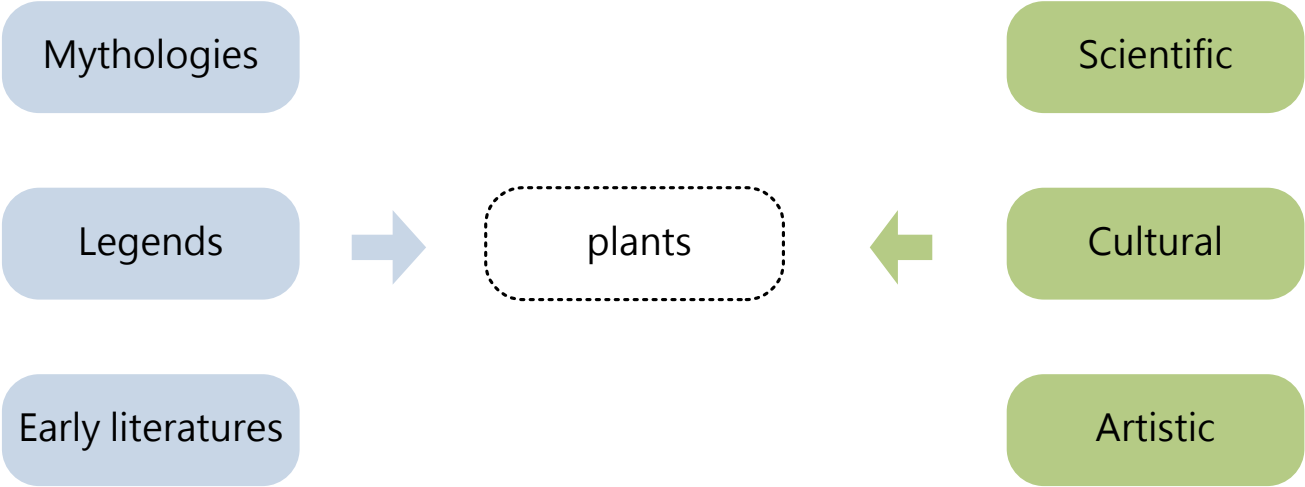
1. The nature of plants - plants as organic entities.
2. Do plants have consciousness and communication ability?
3. The relationship between human and plant.

## I. The nature of plants - plants as organic entities.



Many stories of classical mythology and early modern literatures frequently refer to the plants we know and their relationship to us. Within this context, the incomplete understanding that humans acquired about plants has become a crucial element in the metaphors and interpretations.

I. The nature of plants - plants as organic entities.



The works as the fruitful results of this workshop should examine our understanding of the contemporary world and of the existing plants in it - either from the scientific, cultural, or artistic aspects - and search for the origins of these plants from ancient mythologies.



## 2. Do plants have consciousness and communication ability?



*Vermin*  
2011,  
23'09''  
Adi Gelbart

There has been an extensive and ongoing discussion revolving around plants' consciousness and communication ability. These discussions in this respect not only challenges our conventional definition of plants, but also provokes the debates as following:

## 2. Do plants have consciousness and communication ability?



*Vermin*  
2011,  
23'09''  
Adi Gelbart

- How does the “personification” of plants, a technique once adopted only in mythology, legend and literature, come into prominent in the present era?
- Should plants be considered to have rights as human beings do?
- How do these mythological and literary imaginations undergo a rebirth in modern times?



### 3. The relationship between human and plant in the present era.



*Quanticare*  
2012, Film, 2'23"  
Amy Congdon,  
Jenny Lee,  
Ann-Kristin Abel

The following questions were discussed in this workshop:

- What kind of “plants” that takes the form of hybrids of human and plant would survive in the contemporary world?
- How would humans interact with them?
- Why would these “plants” appear?

3. The relationship between human and plant in the present era.



*Quanticare*  
2012, Film, 2'23''  
Amy Congdon,  
Jenny Lee,  
Ann-Kristin Abel

- How would they look like?
- What would they do?
- What would be their relationship to humankind?
- What would be their relationship to this world?





## Methodology

The following practical methodology was covered:

Kick-off

Secret lives  
of plants



Collect

Fieldwork:  
Observe, collect & explore



Record

Time-lapse  
& stop motion



Transfer

The power of  
kinetic devices  
& plants' dynamics



Express

Ways of life  
& communication?

1/5  
Kick-off

## Secret life of plants



1/5  
Kick-off

# Secret lives of plants



1/5  
Kick-off

# Secret lives of plants

Sundew





1/5  
Kick-off

# Secret life of the plants

Dodder



1/5  
Kick-off

# Secret lives of plants

Slime Mold





Fieldwork: observe, collect and explore



2/5

Collect

Fieldwork: observe, collect and explore





2/5

Collect

Fieldwork: observe, collect and explore





2/5

Collect

Fieldwork: observe, collect and explore



2/5  
Collect

Fieldwork: observe, collect and explore





## Time-lapse & stop motion



3/5

Record

# Time-lapse & stop motion

Arrange > record > present





3/5  
Record

## Time-lapse & stop motion

Arrange > record > present

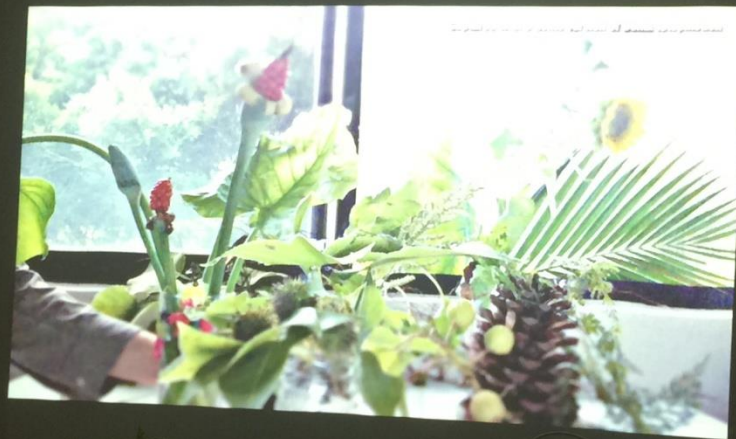


3/5

Record

# Time-lapse & stop motion

Arrange > record > present



4/5  
Transfer

The power of  
kinetic devices

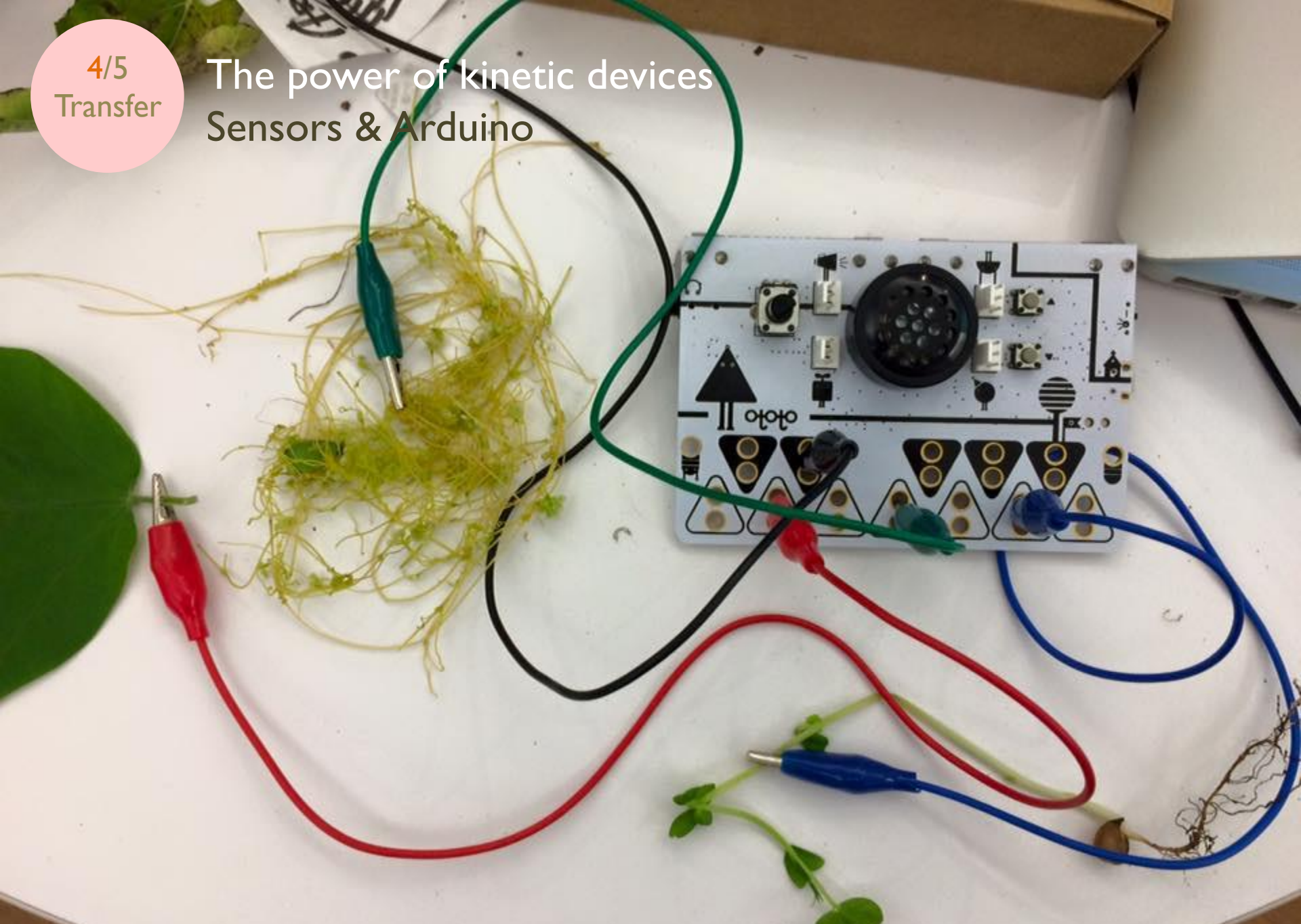
vs.

The dynamics  
of plants



4/5  
Transfer

# The power of kinetic devices Sensors & Arduino



4/5  
Transfer

## The dynamics of plants

Pine cone  
open & close





4/5  
Transfer

## The dynamics of plants

Slime Molds  
have traits like both  
animals and plants(fungi)

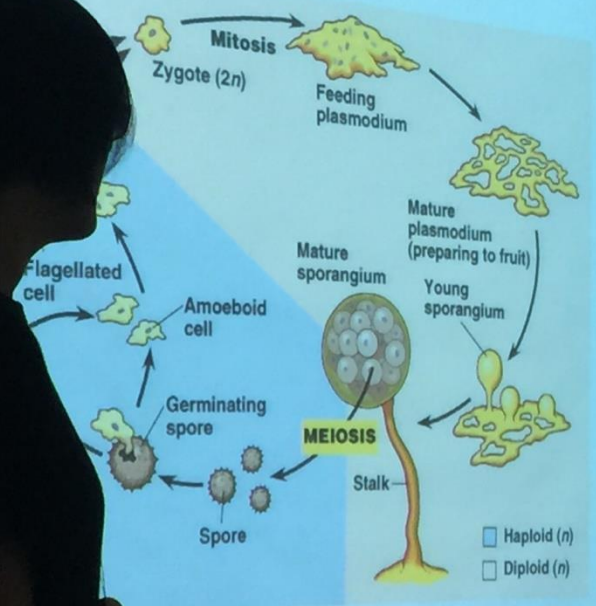


During good times, they live as independent, amoeba-like cells, dining on fungi and bacteria. But if conditions become uncomfortable, individual cells begin gathering together to form a single structure



4/5  
Transfer

# The dynamics of plants



4/5

Transfer

The power of kinetic devices vs. plants' dynamics





4/5  
Transfer

# Connecting the machines and plants





4/5  
Transfer

## Connecting the machines and plants



4/5

Transfer

## Connecting the machines and plants



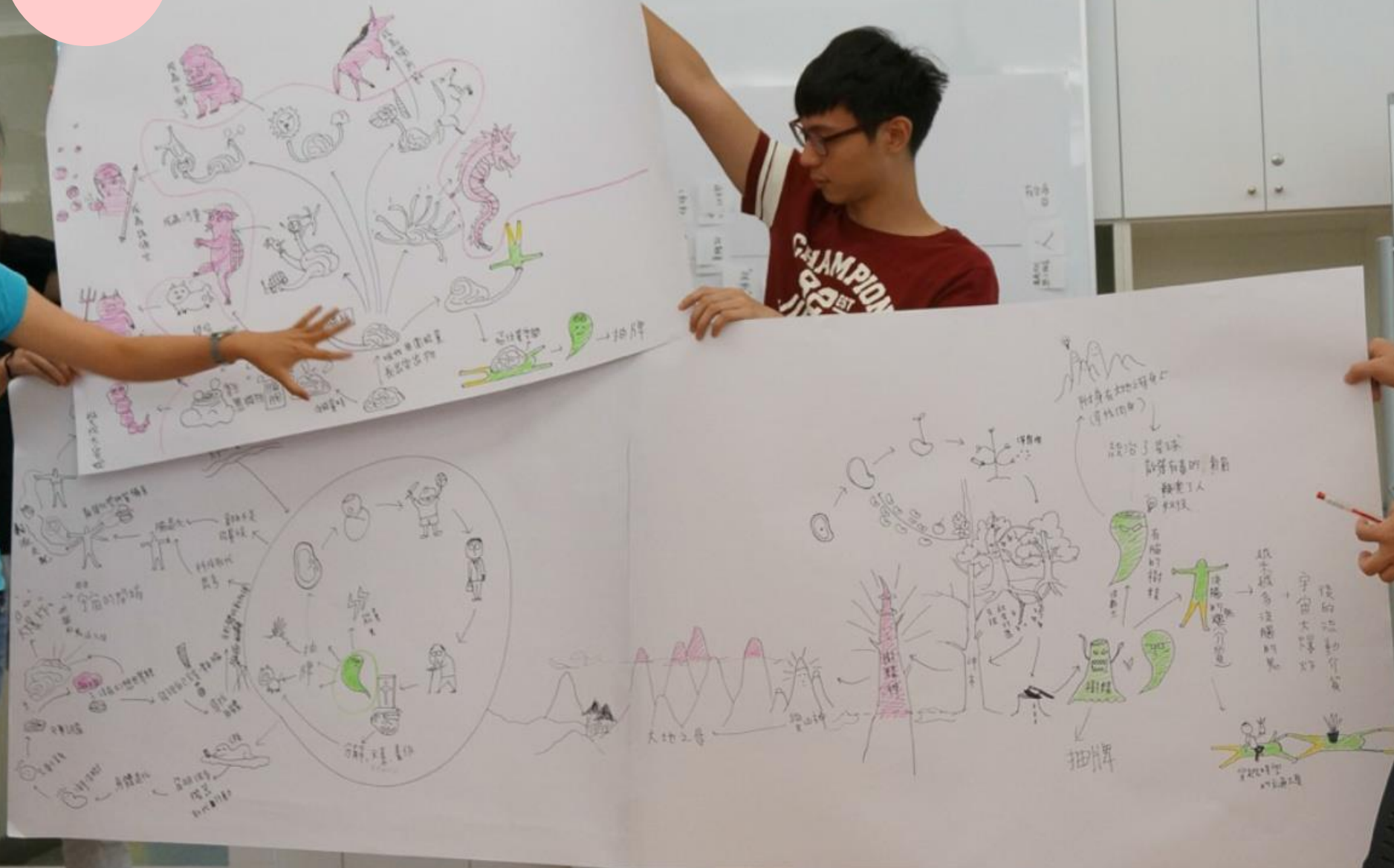
5/5  
Express

Ways of life & communication?



5/5  
Express

# Brainstorming & discussion



5/5  
Express

# Brainstorming & discussion





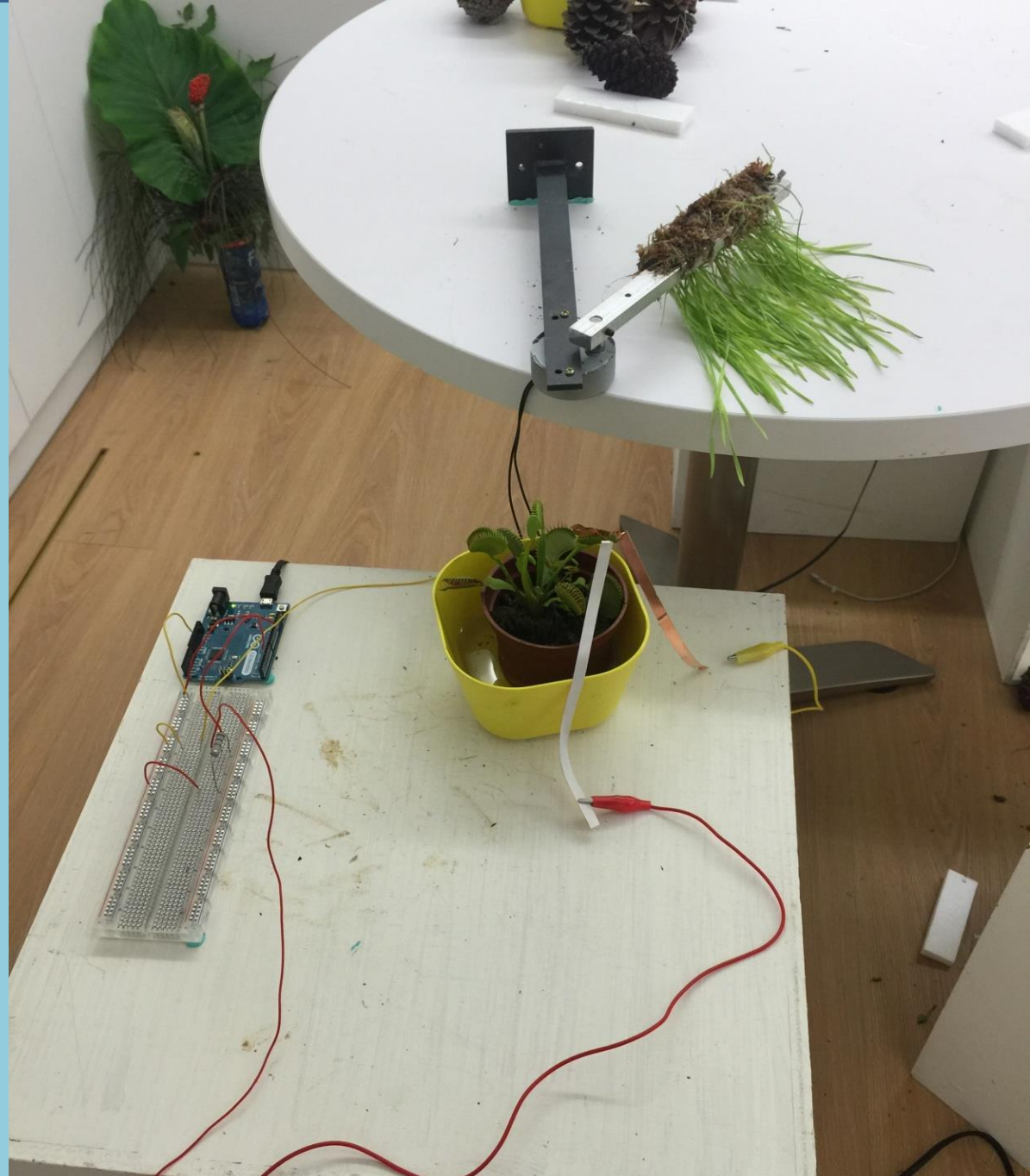
5/5  
Express

# Brainstorming & discussion



5/5  
Express

Get connected





5/5  
Express

Expression

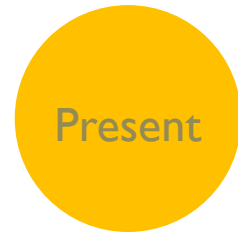


5/5  
Express

Expression







Final artwork presentations



Present

## The requirements of final presentation

The final presentation of each group should be a ritual in which you invite the viewers to communicate with your plants. The “ritual” could be a performance, ritual-based objects, stories, sounds, or any other material that indicates the continued existence of the “ritual.”



Present

## Final artwork presentations

Team 1: The ritual of summoning the spirits of plants

Present

## Final artwork presentations

Team 2: Timeline of evolution for  
hybrids of human and plant

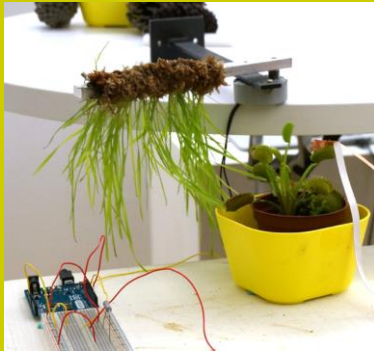


Present

## Final artwork presentations

Team 3:  
The future of life -  
The symbiotic  
relationship  
between human  
and plant





Thank you!